



New Feature Guide

Double-Take[®] Manager for Exchange 4.0

BREATHE EASY.
WE'VE GOT YOU COVERED.



Table of Contents

Introduction	3
Product Description	3
New Features	4
Integrated Recovery and Failback	4
Exchange Configuration Cloning	5
Enhanced Validation Checks	5
Integrated Controls.....	5
Multiple IP Address Monitoring	6
Automatic Utilization of Secondary DNS Server	6
Enhanced Management Console	7
Configuration Change Persistence	7
Improved Failover Times.....	7
Summary	8

Introduction

Product Description

Double-Take[®] Manager for Exchange was previously known as Exchange Failover Toolkit (EFT) v3.0. The revised naming better reflects the nature of this product and is more indicative of its enterprise-class features and value. The overall suite of application-specific solutions is called Double-Take Application Manager (DTAM), with initial support for Microsoft[®] Exchange and planned support for additional applications to follow. You will receive updates on the availability of additional application-specific versions of Double-Take Application Manager as they are available.

Double-Take Manager for Exchange is designed specifically for the configuration and management of Double-Take for the protection of Microsoft Exchange environments. It automates the setup and configuration of replication and failover monitoring of Exchange servers for rapid and successful deployment. Features such as auto-discovery of servers and key Exchange data files simplify the process down to just four steps and reduce the risk of human error.

Exclusive features such as the *pre-flight check* help to ensure that all necessary settings within the environment are configured correctly for replication and failover of Exchange. Any errors identified are listed along with suggestions for their resolution. Double-Take Manager for Exchange checks over 50 different configuration criteria and can automatically correct a majority of them on the administrator's behalf. This helps to achieve a seamless, error-proof deployment.

Double-Take Manager for Exchange performs recovery and failback of Exchange servers with a minimal window of downtime. By performing recovery tasks while users remain online, Exchange downtime is reduced to just the few moments that it takes for Double-Take to stop and start the necessary Exchange services and relegate processing back to the production server.

Double-Take is at the core of our Exchange solutions, making available the extensive set of features and functions it offers. All advanced Double-Take features including *intelligent data compression* and *flexible bandwidth scheduling* are available for fast and efficient replication of Exchange data.

Double-Take Manager for Exchange 4.0 further integrates the management of the Exchange protection environment into a single console with increased automation, speed, and efficiency for improved recovery times and higher levels of Exchange availability.

New Features

Double-Take Manager for Exchange 4.0 contains many new features and enhancements that we are very excited to announce. Some of these are readily apparent and add increased functionality and simplicity while others are updates to the core product to improve reliability, stability, and performance. Version 4.0 further simplifies the deployment and configuration of Double-Take for the protection of Exchange servers while increasing the levels of protection and availability.

Integrated Recovery and Failback

To ease recovery procedures and reduce downtime, Double-Take Manager for Exchange 4.0 provides integrated restore and failback capabilities to automatically recover data to the original production Exchange server and initiate failback. When using the DNS failover option, integrated restoration and failback reduce the overall downtime required for the recovery process by automatically creating a reverse replication set from the target back to the original source and then replicating the target data to rebuild the production server.

The Exchange servers remain online and available to users during the entire recovery process, allowing the rebuild of the production server to be performed at any time without impacting users' productivity. Once the restore is complete, Double-Take will continue to replicate changes on the target back to the original source until failback is performed. This will ensure the servers remain synchronized. Failback can subsequently be initiated at any time with the assurance that all Exchange data will be current once the failback is complete. This process allows the recovery to be run transparently during the day while the failback can be performed off hours to minimize impact to users.

Failback is performed gracefully by stopping services and completing all in-process transactions. All final changes on the target will be replicated back to the production server before performing the actual failback to prevent any loss of data.

To ensure that the Exchange data continues to be protected once the failback is complete, Double-Take Manager for Exchange will automatically configure and initiate replication of the now active production server back to the target.

For testing purposes, failback can be initiated without restoring the target data.

Failback options include:

- *Immediate* – initiate failback once data recovery is complete
- *Prompt for failback* – allows failback to be initiated manually rather than automatically after data recovery is complete. Data will continue to be replicated until failback is initiated.
- *Allow queues to empty* – which will wait for all processing queues to be emptied prior to failing back to help ensure no loss of data.
- *Protect source data after failback* – automatically configure and initiate replication from the newly rebuilt production server to maintain Exchange protection levels.

Double-Take Manager for Exchange Integrated Recovery and Failback delivers:

- Automated recovery to reduce manual administrator efforts
- Improved recovery times for minimized downtime when using DNS failover
- Minimized loss of user productivity
- Increased ROI by reducing manual intervention and Exchange downtime

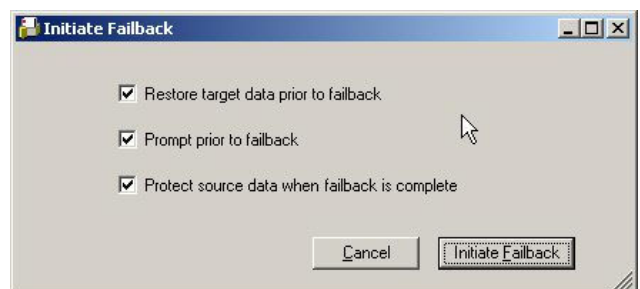


Figure 1 – DTAM Failback Options

Exchange Configuration Cloning

Further simplifying the overall configuration of Exchange protection with Double-Take, DTAM 4.0 introduces the ability to clone the production Exchange configuration to the target Exchange server. Simply perform the base install of Exchange on the target server and Double-Take will replicate the information stores, and configuration settings to ensure the target is ready to be brought online without additional manual changes.

When performing a validation, if DTAM discovers that there are differences in the Exchange settings between the source and target servers, the option is provided to clone the production Exchange server to the target Exchange server.

Cloning helps to minimize configuration errors and the risk of an incomplete or incorrectly configured target server should a failover occur. Setup time is reduced by eliminating the need to manually configure the target Exchange server, while future changes need only be made once to the production server as Double-Take will replicate those changes to the target.

Enhanced Validation Checks

Improving on our exclusive *pre-flight check*, Double-Take Manager for Exchange 4.0 includes many additional points of validation to further reduce or even eliminate the potential for environmental and configuration errors.

The *pre-flight check* eliminates the tedious task of manually debugging environmental barriers that will prevent Double-Take from successfully running. Double-Take Manager for Exchange provides problem descriptions and, when possible, potential resolutions to these problems to direct administrators to a rapid resolution.

Integrated Controls

Adding to the simplicity and ease of which Double-Take Exchange protection is deployed and managed, Double-Take Manager for Exchange 4.0 further integrates standard Double-Take controls into its management console to reduce and even remove the need to use the Double-Take console to configure and manage the Exchange protection environment.

Integrated options within the DTMe management console include

- IP Route selection – Choose the appropriate network to transmit replication data
- Compression – Select the level of compression for each Exchange replication set
- Configure failover monitoring – Enable failover and select the method; identity or DNS failover

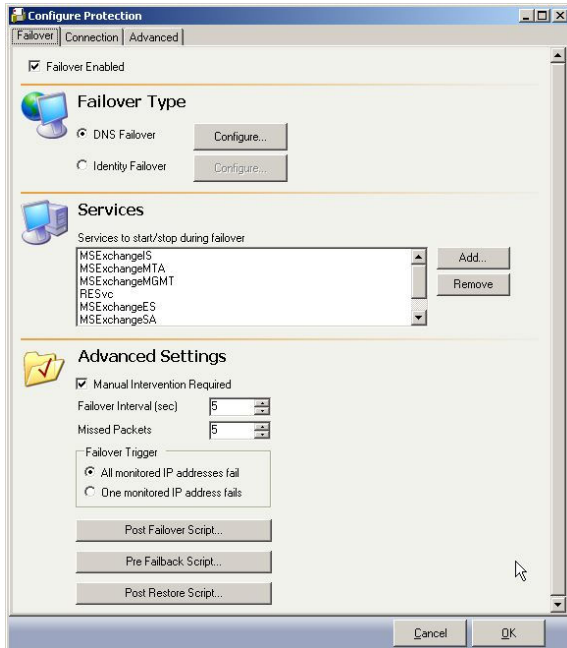


Figure 2 – Failover Configuration



Figure 3 – Connection Configurations

Multiple IP Address Monitoring

For enhanced failover monitoring and prevention of false failovers, Double-Take Manager for Exchange 4.0 allows for the specification of multiple IP addresses to monitor for determining if failover is necessary. Failover can be controlled to occur when either one or all of the monitored IP addresses fail (figure 2).

By monitoring multiple IP addresses, Double-Take Manager for Exchange can help to prevent a false failover when connectivity of a single a network connection fails. Double-Take will attempt to contact the Exchange server on the alternate IP addresses, and if successful will not initiate a failover. Specific IP addresses can be also be left unmonitored if they are not critical to the operation of Exchange.

Automatic Utilization of Secondary DNS Server

Further increasing availability and failover capabilities, Double-Take Manager for Exchange 4.0 can now be configured to utilize a secondary DNS server for failing over should the primary DNS server be unavailable. During a failover, Double-Take updates the appropriate DNS records for redirecting users to the target server. If the primary DNS server is not available, Double-Take will update these records on the secondary DNS server to ensure a successful failover.

Enhanced Management Console

Double-Take Manager for Exchange 4.0 features a newly designed user interface with improved layout of controls. This new design helps to simplify the use and management of Double-Take Manager for Exchange by grouping related features for more intuitive navigation.

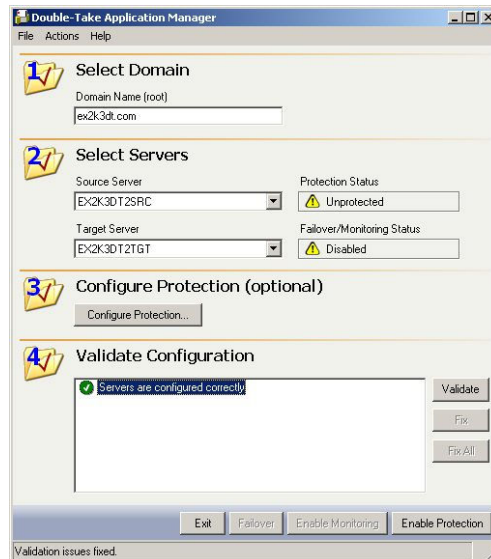


Figure 4 – DTAM Management Console

Configuration Change Persistence

To simplify the process of making changes to Double-Take Manager for Exchange configurations, global-setting changes will be automatically saved as the default values. In addition, after setting up and enabling protection for a particular connection, that connection's configuration information can be used as the default configuration for the next connection configured.

The automated persistence of configuration settings saves time and effort to simplify Exchange protection management.

Improved Failover Times

Double-Take Manager for Exchange 4.0 has added functionality to initiate the immediate propagation of Active Directory and DNS changes during a failover. While this process can typically take up to 45 minutes for Windows to make the changes globally, this added functionality within Double-Take Manager for Exchange can request the immediate propagation of these changes to allow users to reconnect to the target server much more quickly.

Summary

Double-Take® Software is the leading provider of data protection solutions for Exchange, with over 80,000 total licenses sold and over 20,000 of those protecting Exchange servers. We are very excited about the enhanced capabilities available in Double-Take Manager for Exchange 4.0 as they demonstrate our commitment to providing customers with continuously advancing solutions for protecting their mission-critical Exchange data.

This product release further strengthens and increases our industry-leading position in the Exchange protection and availability market, enabling businesses to achieve even higher levels of protection against threats of most any kind.

For more information on Double-Take Manager for Exchange please contact your local sales representative or Double-Take Software directly at 1-888-674-9495.

For over 10 years, Double-Take® Software has been providing the products, services, and support to help you be successful in protecting your most critical applications. When losing data is not an option, your only option is Double-Take.

About Double-Take® Software

NSI Software, Inc. doing business as Double-Take® Software, provides the world's most relied upon solution for accessible data protection for Microsoft® Windows® applications. The Double-Take product is the standard in data replication, enabling customers to protect business-critical data that resides throughout their enterprise. With its partner programs and professional services, Double-Take delivers unparalleled data protection, centralized back-up, high availability, and recoverability. It's the solution of choice for thousands of customers, from SMEs to the Fortune 500 in the banking, finance, legal services, retail, manufacturing, government, education and healthcare markets. Double-Take is an integral part of their disaster recovery, business continuity and overall storage strategies. Double-Take Software is privately held and headquartered in Southborough, MA. For more information, please visit www.doubletake.com.

© 2006 NSI Software, Inc. All rights reserved.

Double-Take®, GeoCluster® and NSI® are registered trademarks of NSI Software, Inc. Balance™ and Double-Take for Virtual Systems™ are trademarks of NSI Software, Inc. Microsoft, Windows, and the Windows logo are trademarks, or registered trademarks of Microsoft Corporation in the United States and/or other countries. All other trademarks are properties of their respective companies. are trademarks of NSI Software, Inc. Microsoft, Windows, and the Windows logo are trademarks, or registered trademarks of Microsoft Corporation in the United States and/or other countries. All other trademarks are properties of their respective companies.

For more information on Double-Take® Software products and services please contact us.

Double-Take Software Headquarters
257 Turnpike Road, Suite 210
Southborough, MA 01772
Phone: 800-775-4674
Fax: 201-656-2727

Double-Take Software
8470 Allison Pointe Blvd. Suite 300
Indianapolis, IN 46250
Phone: 800-674-9495
Fax: 317-598-0187

Or visit us on the web at www.doubletake.com



Or send email to info@doubletake.com

Warning: No part of this document may be reproduced or transmitted in any form or by any means, electronic, or mechanical, for any reason, without the express written permission of NSI Software, Inc. The information in this document is subject to change without notice. Although we try to provide quality information, NSI makes no claims, promises or guarantees about the accuracy, completeness, or adequacy of the information contained in this document. Companies, names and data used in examples herein are hypothetical and/or fictitious unless otherwise stated.